



# The 13th EFSMA Congress of Sports Medicine



**Bucharest**  
**25-27 September 2025**

# **EFSMA -We aim for excellence in Sports Medicine**

**Improve your practice**

**Stay up to date with the latest research**

**Share your knowledge**

**Grow your network**

**Launch your career**



# ROMANIAN SOCIETY OF SPORTS MEDICINE one of the oldest in Europe



Founded in 1932



**Our expertise on international events**

1969

2nd FIMS European Sports Medicine Congress

1997 Balkan Congress

2008 Balkan Congress

2009 LEN Symposium

Annual congresses and conferences with international participation



1962 - The Sports Medicine Centre was created for medical assistance for Olympic and National teams, setting the standards for the national sports medicine network. Later on it becomes National Institute of Sports Medicine.

1967 - a specialty training program in Sports Medicine - University of Medicine and Pharmacy „Carol Davila” Bucharest, which to this day continues to grow successfully.





# VENUE

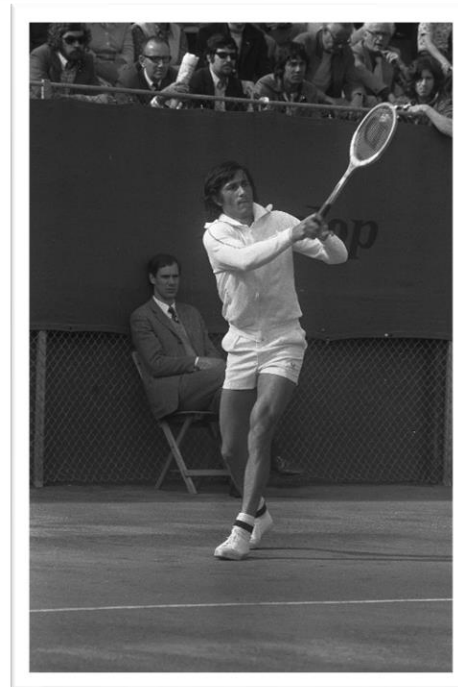


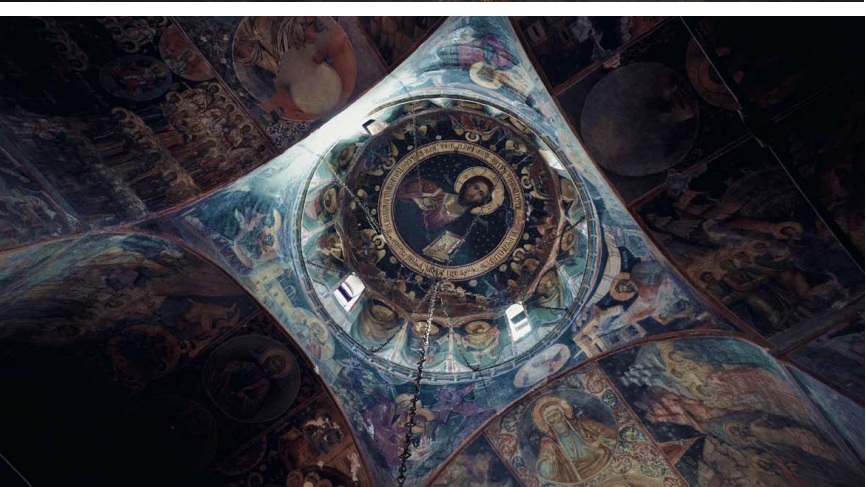
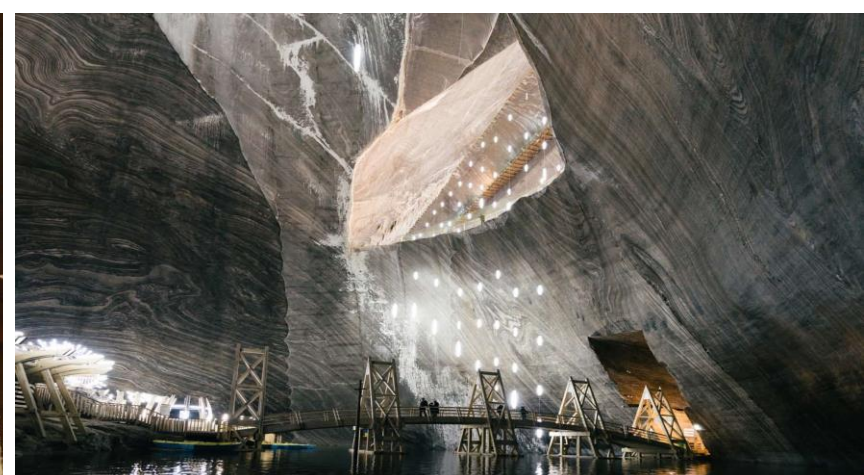
- Easily accessible: New modern airport serving all major airlines.
- Euro-Atlantic space (NATO member) with excellent direct air connections from European capitals & most of important cities
- Ascending trend of infrastructure development and international event market share: enhanced professional expertise for meeting planning, management and specialized services.
- Year around destination: unspoiled natural beauty, breath-taking Carpathian mountains, many Black Sea beach towns, cultural and historical values of a generous diversity, including an intense musical and artistic life and highly creative ideas for social programs connected to events and incentives.
- Affordable destination for the delegates. Food & wine, tasty food, superb domestic wines, liquors , hand crafted souvenirs, entertainment and museums at affordable prices will entice you to return for more.
- Most international hotel chains and multinational corporations present in Romania.

## Why Romania ?



# Romania gave Sports some of the greatest Athletes





# BUCHAREST a European Capital



# HOST CITY - BUCHAREST



A century ago, the capital of Romania was known as the “Little Paris” for its French-style Art Nouveau and Art Deco architecture and vibrant cultural life.

Today, Bucharest is a year around destination with unspoiled nature, cultural and historical values of a generous diversity, including a vibrant artistic scene and highly creative ideas for social programs connected to events and incentives.





# HOST CITY - BUCHAREST



## WHERE *MODERNISM* AND *TRADITION* ARE LIVING TOGETHER

Bucharest is known for its wide, tree-lined boulevards, glorious Belle Époque buildings.

Calea Victoriei (Victory Street). Stroll along this street from Piata Victoriei to Piata Natiunilor Unite to discover some of the most stunning buildings in the city, including the Cantacuzino Palace, the historical Revolution Square, The National History Museum, The former Royal Palace that host The National Museum of Art of Romania or the impressive Romanian Athenaeum.

Kiseleff Avenue is one of the most beautiful long boulevards in Bucharest, dotted with impressive buildings with gorgeous architecture. You will see here most of the embassies and ministerial houses as well. At the end of the avenue, the Romanian Arch de Triumph raises tall.

Take a walk in Herastrau Park, the biggest park in Bucharest and visit open-air Village Museum to have a taste of rural Romanian life.

The Palace of Parliament is the world's second-largest administrative building (after the Pentagon) and former dictator Nicolae Ceaușescu's most



# HOST CITY – BUCHAREST ACCESSIBILITY

- The modern Otopeni International Airport serves all major international carriers. The International Airport is 20 km away from the city center and 11 km from the proposed congress venue.
- You can reach Romania by plane from any destination in Europe in about 3 hours. Shuttles, and modern buses connect the airport with the city centre every 15 minutes. Taxis are plentiful.



- Bucharest's public transport system is the largest in Romania and one of the largest in Europe. Navigating Bucharest by public transport is very easy, as the Romanian capital is served by a modern underground, a vast bus network, trolleybuses and trams. In addition, there is a private minibus system. Taxis are inexpensive compared to other European capitals



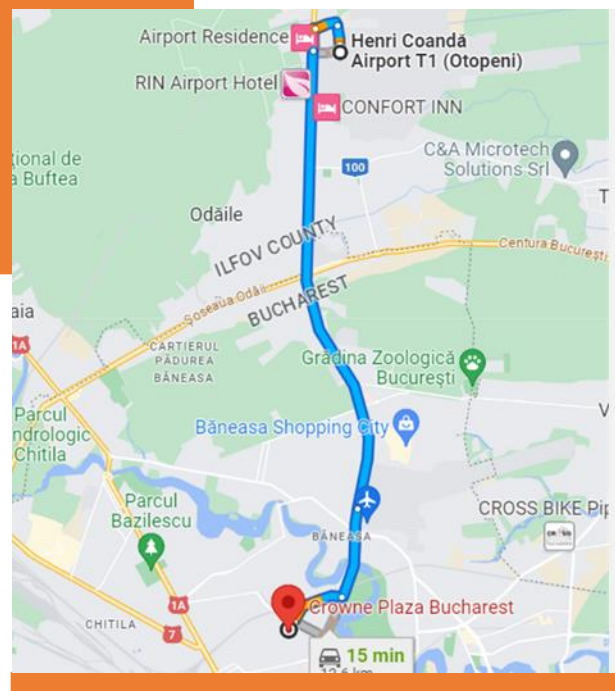
# CROWNE PLAZA BUCHAREST HOTEL

4 star accommodation in Bucharest

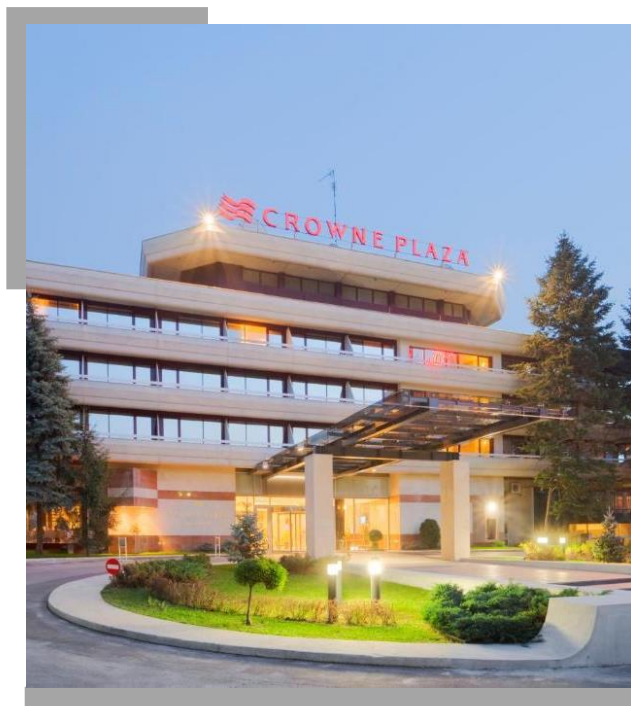
The Crowne Plaza Bucharest has 165 comfortable and elegant rooms, equipped with everything you need for a perfect stay in Bucharest. Specially designed creates a warm and friendly atmosphere for a good night's sleep.



LOCATION

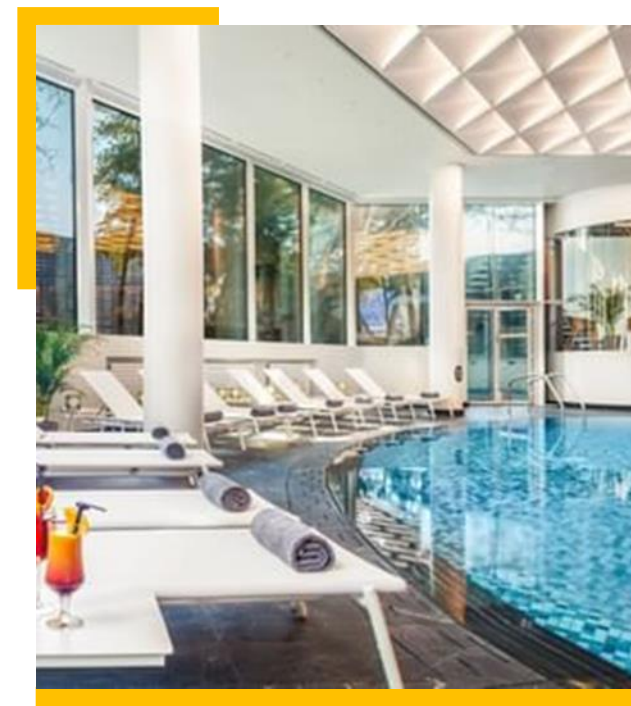


**Located at 15-minute drive from Henri Coanda International Airport, Crowne Plaza Bucharest is a refined hotel and conference center, with good public transport connections to the city center and Gara de Nord train station.**



Crowne Plaza Bucharest is a refined hotel in the North part of the city, in a very peaceful area.

The hotel has 16 fully equipped conference rooms with a maximum capacity of 1,500 seats. Guests benefit from the business center. In the gardens and on the terrace, the property can host outdoor parties.



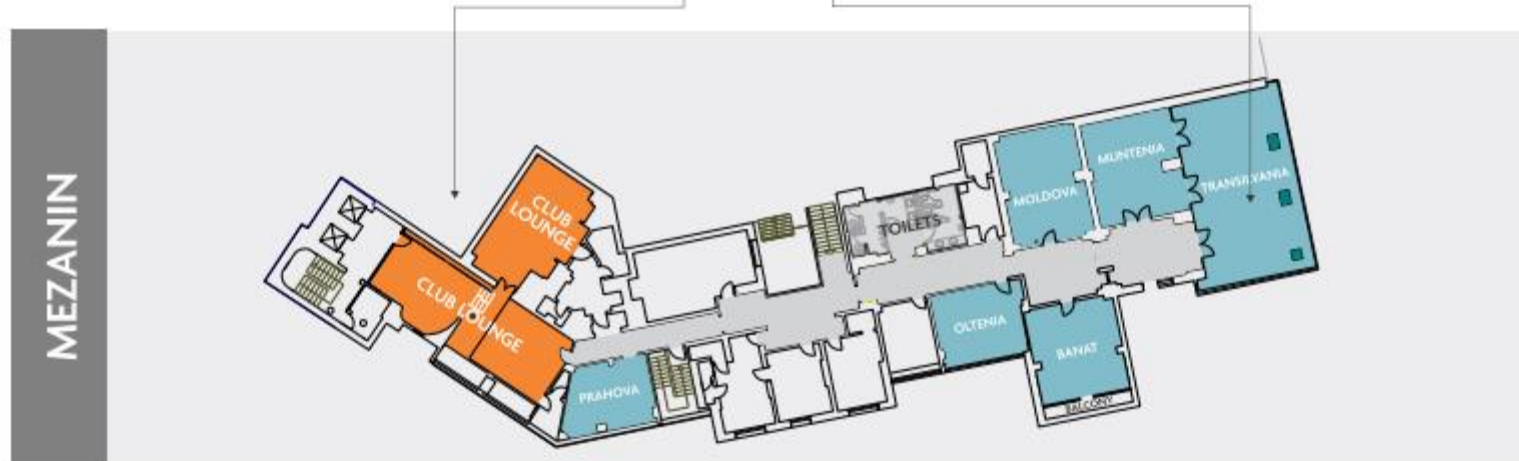
**The Crowne Plaza Bucharest has 165 comfortable and elegant rooms, equipped with everything you need for a perfect stay in Bucharest. Enjoy the ANA spa, equipped with swimming pool, fitness room, hammam, dry sauna, steam sauna and frigidarium.**



# CROWNE PLAZA BUCHAREST HOTEL – venue capacity



Room name	Reception 	Theatre 	Classroom 	U - shape 	Board 	Banquet 
CROWN BALLROOM	600	550	340	130	130	300
Crown Foyer	170	—	—	—	—	—
Crown Skylight	—	—	—	—	—	10
Crown - A	130	110	70	40	30	60
Crown - B	150	130	100	45	40	80
Crown - C	130	110	60	40	30	60
Crown - D	110	90	50	40	30	50
Crown Terrace 1	100	—	—	—	—	—
Crown Terrace 2	50	—	—	—	—	—
ORHIDEEA	120	80	40	35	40	70
Orhideea I	50	40	25	20	20	30
Orhideea II	80	60	35	25	25	50
PRIMAVERA	150	140	70	45	50	100
Primavera Foyer	60	—	—	—	—	—
MAGNOLIA	170	180	100	45	50	100
Magnolia Foyer	100	—	—	—	—	—
Magnolia I	80	80	45	32	30	50
Magnolia II	80	80	45	32	30	50
Magnolia Terrace	100	—	—	—	—	—
LA VERANDA	170	—	—	—	—	100
La Veranda Terrace	30	—	—	—	—	—
TRANSILVANIA	80	70	40	30	30	50
MUNTENIA	20	20	15	12	15	—
MOLDOVA	—	—	—	—	14	—
BANAT	25	20	18	16	16	20
OLTENIA	—	—	—	—	10	—
DOBROGEA	—	20	10	12	12	12
PRAHOVA	—	—	—	—	10	—
MEZANIN FOYER	—	—	—	—	—	—
MAGNOLIA GARDEN	—	70	—	35	—	90
CHERRY GARDEN	—	300	150	80	—	256
PINE GARDEN	—	120	80	80	—	150
CHESTNUT GARDEN	—	150	80	50	—	150
TREE GARDEN	—	100	50	35	—	140



# VENUE : Bucharest Crowne Plaza Hotel





# FEES



Regular Full Fee	600 €
EFSMA Members	450 €
Other health professionals, not physicians	350 €
Physicians during specialization in sports medicine	250 €
PhD Students	250 €
Students	200 €
One Day Registration	200 €

# PARTNERS



## **PARTNERS**

**ROMANIAN OLYMPIC AND SPORT  
COMMITTEE**

**EFSMA**

**CAROL DAVILA UNIVERSITY OF MEDICINE  
AND PHARMACY**

**NATIONAL INSTITUTE OF SPORTS  
MEDICINE**

**NATIONAL INSTITUTE FOR SPORT SCIENCE**

**NATIONAL AGENCY FOR SPORTS**

**MEDIA**

# Sponsors' great Opportunity

- Present and sell your products worldwide
- Share the latest research
- Inspire and be inspired
- Connect with healthcare professionals



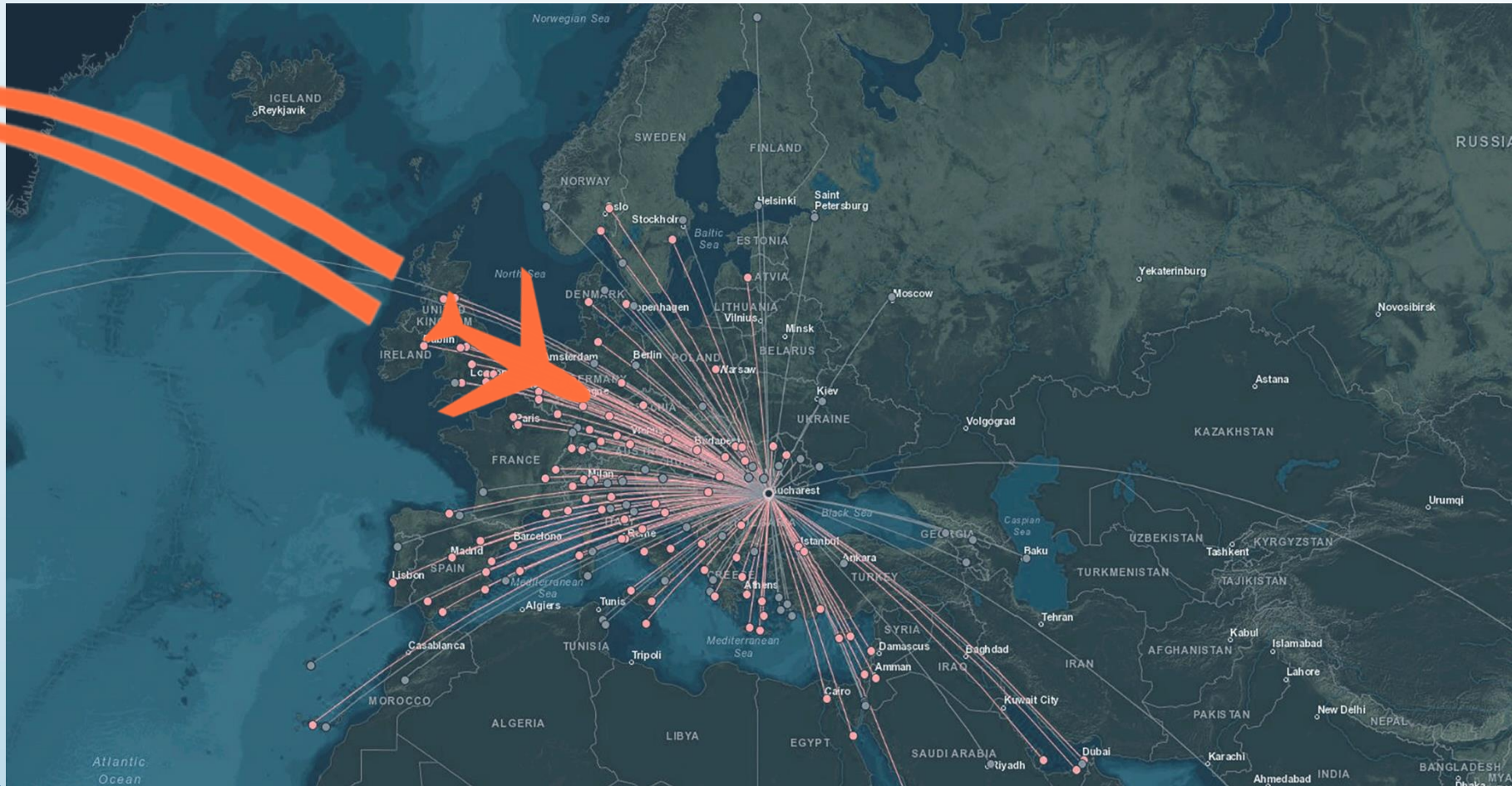
Dear Colleagues

On behalf of the Romanian Society of Sport Medicine I invite you in Bucharest, an interesting place, where traditions and cultural values join modernism for 13<sup>TH</sup> EFSMA SPORTS MEDICINE CONGRESS in 2025.

We strongly believe that our scientific and organizational expertise together with the attractions of Bucharest, will support us to organize a fruitful exchange of ideas and offer the participants nice memories from this part of the world.

Professor Habil. Anca Ionescu, MD, PhD  
Honorary President - Romanian Society of Sport  
Medicine  
Secretary Gen EFSMA

# We can only grow together!



# See you in Bucharest!